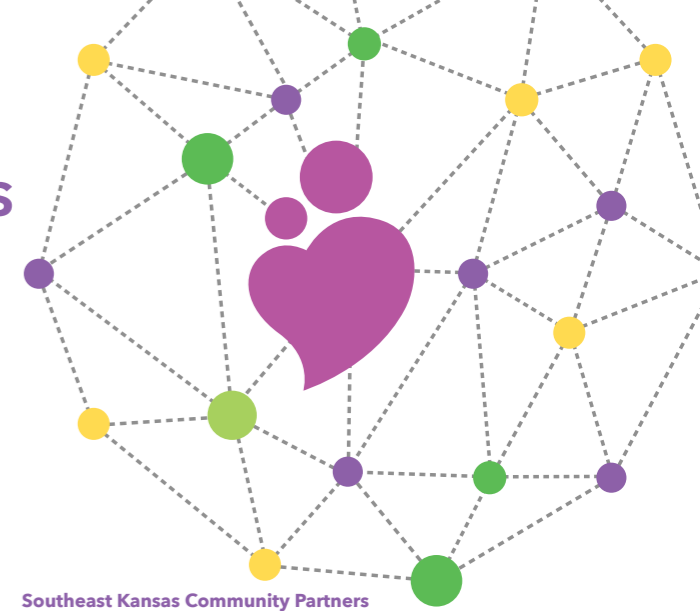
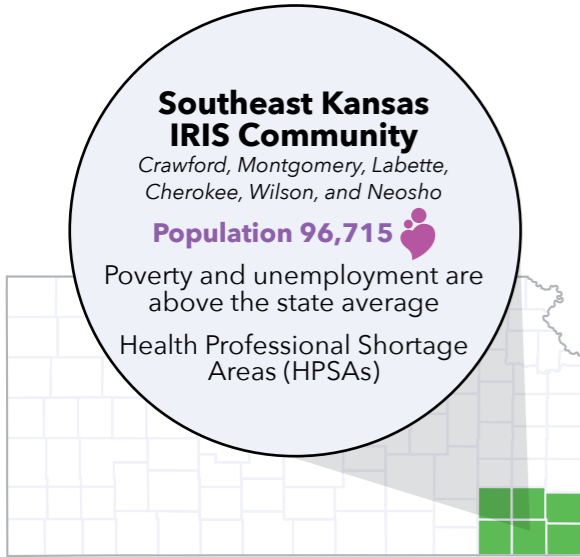


Developing Cross-Sector Referral Networks to Address Social Determinants of Health in Southeast Kansas



Southeast Kansas Community Partners

- Coffeyville USD 445, Parents as Teachers
- Four County Mental Health Center (My Family--Montgomery/Wilson)
- Greenbush, Parents as Teachers
- Kansas Children's Service League, Healthy Families
- Labelle Center for Mental Health (My Family-Labelle)
- Southeast Kansas Community Action Program, Early Head Start/Head Start
- Southeast Kansas Mental Health Center (My Family--Neosho)
- Spring River Mental Health and Wellness (My Family--Cherokee)



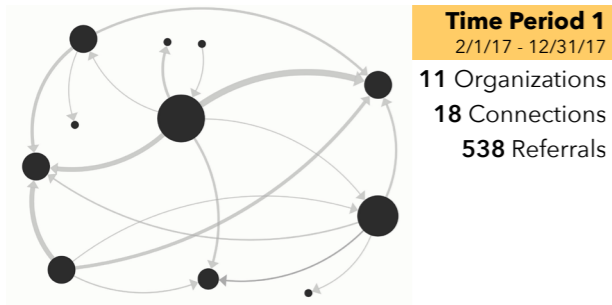
Partners who have actionable data about their coordination workflows and network effectiveness can **better identify gaps, pressure points, and sector disconnects.**

A larger coordinated network of providers is also able to increase the number of individuals assessed for needs, refer more individuals to more services, and ultimately increase the reach by populations served.

Southeast Kansas

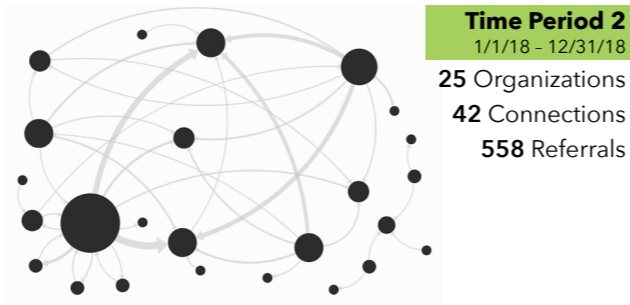
Referrals steadily increased over time until 2020, when disruptions in the network and referral patterns changed. Trend data over time in the pattern of cross-sector referrals demonstrated which sectors were more likely to 'send' vs 'receive' and can serve as a tool to monitor emerging needs or capacity strains.

Over time, as the cross-sector network grew, so too did the interconnection (e.g., uni/bi-directionality of referrals) between providers as they strengthened the holistic social support, social services, public health, and healthcare systems of care.



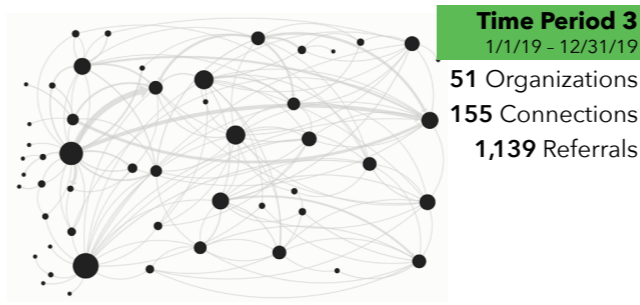
Sent Received →

| | | |
|---------------------|-----|-----|
| Resource Navigation | 535 | 6 |
| Public Health | 3 | 1 |
| Early Childhood | 0 | 529 |



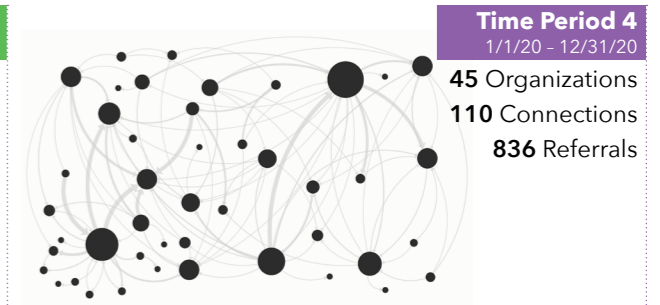
Sent Received →

| | | |
|----------------------------|-----|-----|
| Resource Navigation | 524 | 22 |
| Public Health | 23 | 13 |
| Family Support | 5 | 10 |
| Early Childhood | 4 | 484 |
| Behavioral Health | 1 | 1 |
| Concrete Supports | 1 | 2 |
| Developmental Disabilities | 0 | 26 |



Sent Received →

| | | |
|----------------------------|-----|-----|
| Resource Navigation | 724 | 117 |
| Public Health | 274 | 159 |
| Healthcare | 58 | 13 |
| Concrete Supports | 52 | 41 |
| Early Childhood | 17 | 701 |
| Family Support | 10 | 36 |
| Developmental Disabilities | 3 | 60 |
| Behavioral Health | 1 | 12 |



Sent Received →

| | | |
|----------------------------|-----|-----|
| Resource Navigation | 378 | 87 |
| Public Health | 354 | 250 |
| Healthcare | 70 | 40 |
| Early Childhood | 13 | 363 |
| Developmental Disabilities | 9 | 31 |
| Family Support | 8 | 21 |
| Concrete Supports | 3 | 32 |
| Behavioral Health | 1 | 12 |