



Health of Cancer Survivors in Kansas

Ahmed Ismail, MB BCh, PhD

Senior Epidemiologist

Kansas Department of Health & Environment

ahmed.ismail@ks.gov

Aims of the current work

- Examine the differences in health risk/protective behaviors, determinants of health status, and access to health care between Kansas cancer survivors and Kansans without cancer
- Determine the prevalence of receiving treatment summary and care plan, financial hardship, participation in clinical trial, and pain management among cancer survivors.

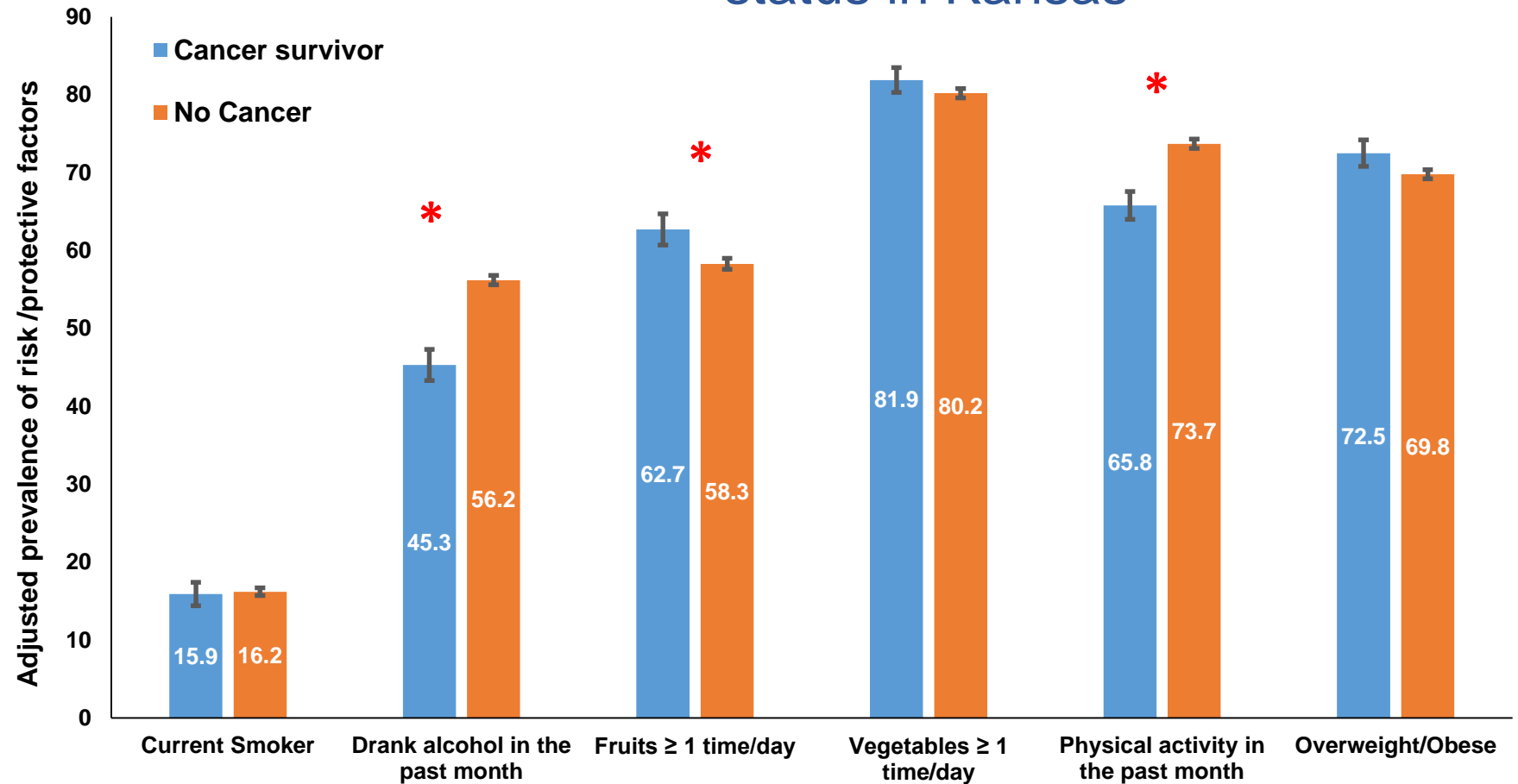
Methodology

- Data Source:
 - 2016-2019 Kansas Behavioral Risk Factor Surveillance System (BRFSS)
 - Survivorship Module in 2016-2018 BRFSS
- Data Analysis: SAS complex survey design was employed to calculate prevalence estimates

Health Risk/Protective Behaviors by Cancer Status, Kansas 2019

In 2019, **12.8 %** of Kansas adults had cancer

Health risk/protective behaviors by cancer status in Kansas

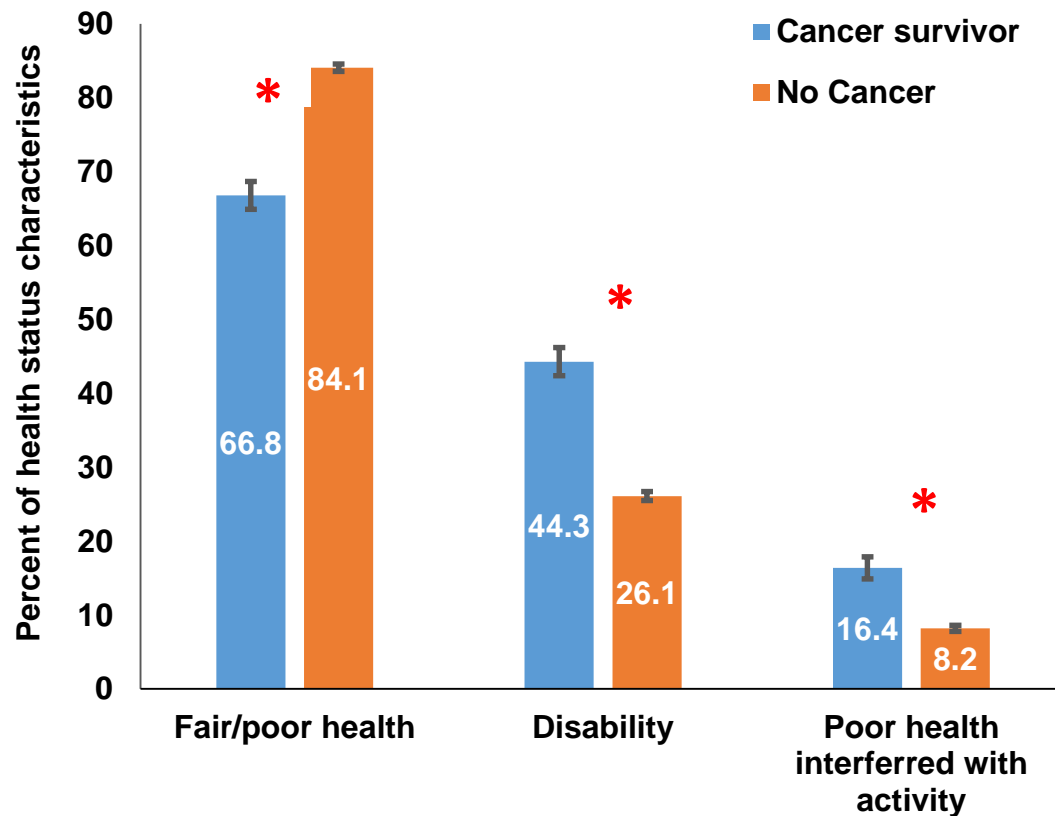


* The groups differ significantly.

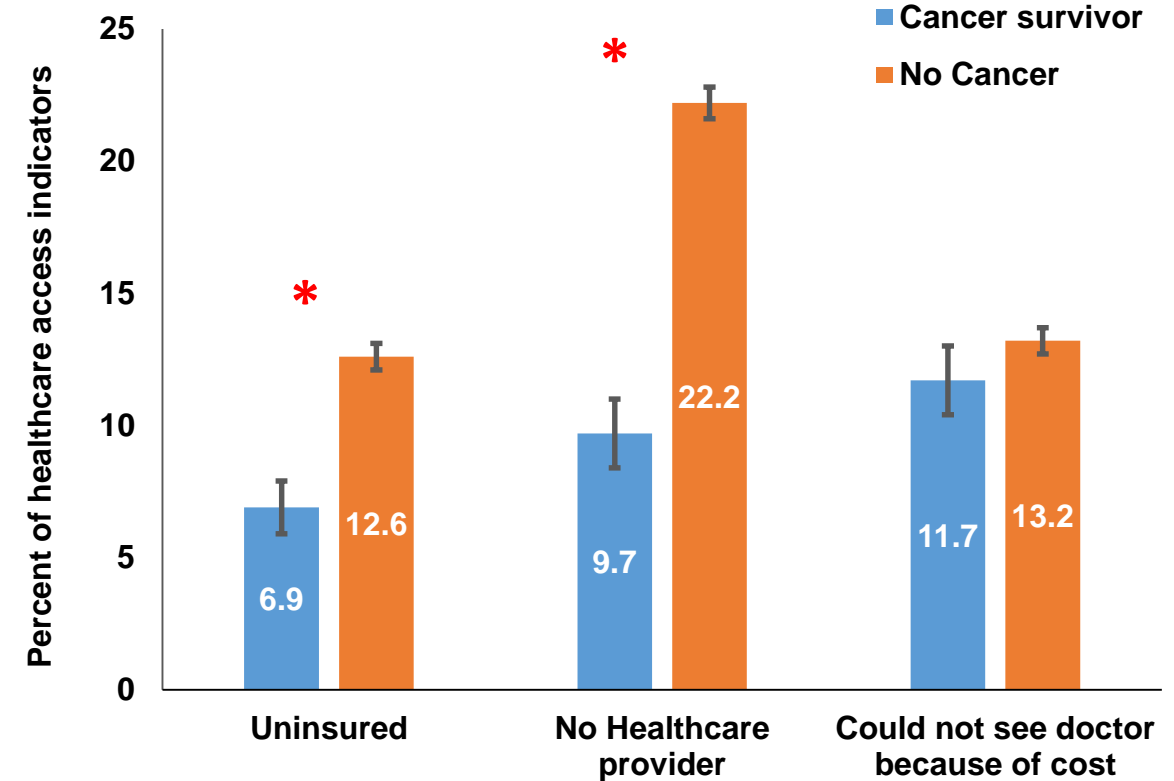
Source: 2019 Kansas Behavioral Risk Factor Surveillance System, Bureau of Health Promotion, KDHE

Health Status and Health Care Access among Cancer Survivors, Kansas 2019

Health status of Kansas survivors



Health care access among Kansas survivors

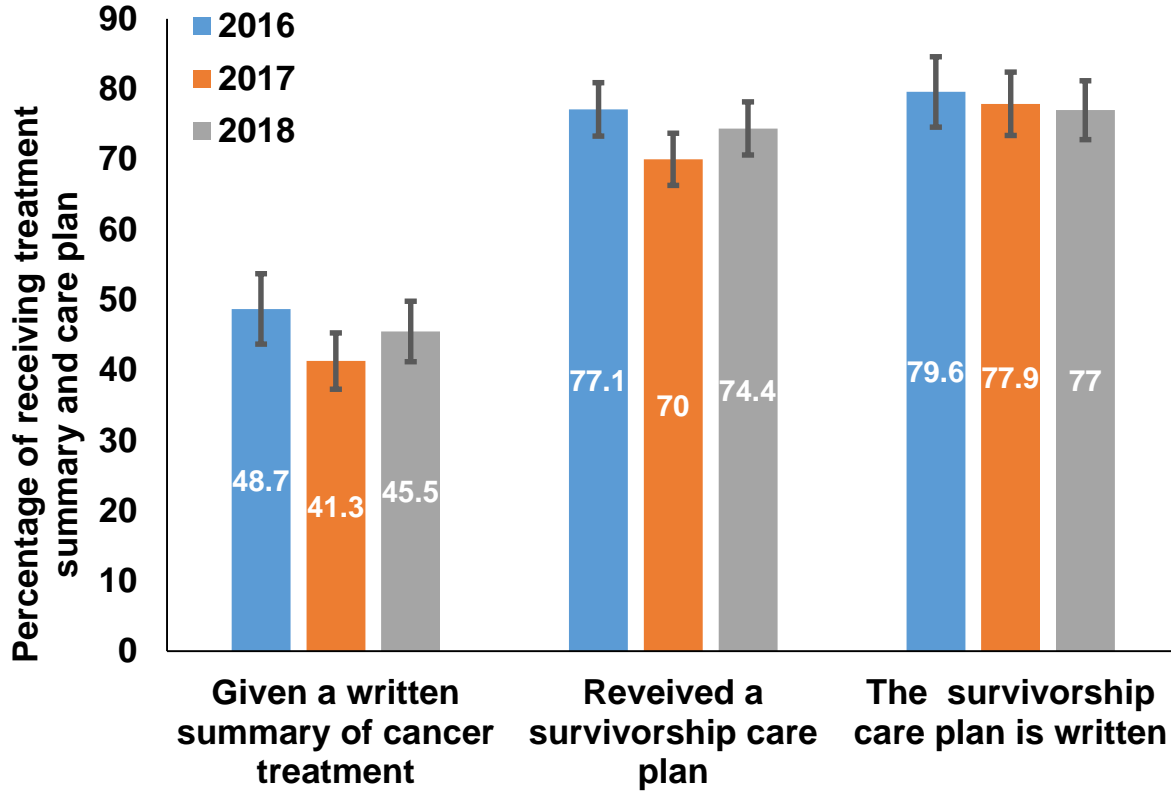


* The groups differ significantly.

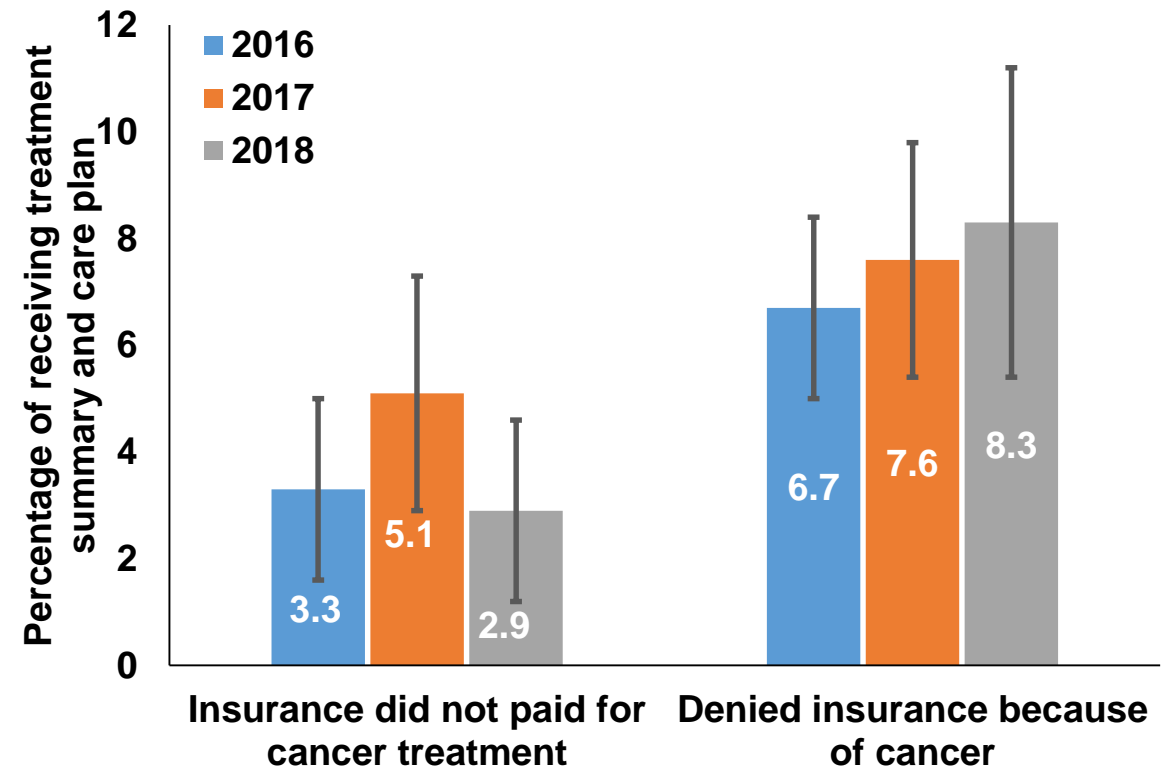
Source: 2019 Kansas Behavioral Risk Factor Surveillance System, Bureau of Health Promotion, KDHE

Receiving Treatment Summary and Care Plan, and Financial Hardship among Kansas Survivors, KS 2016-2018

Receiving treatment summary and care plan among cancer survivors



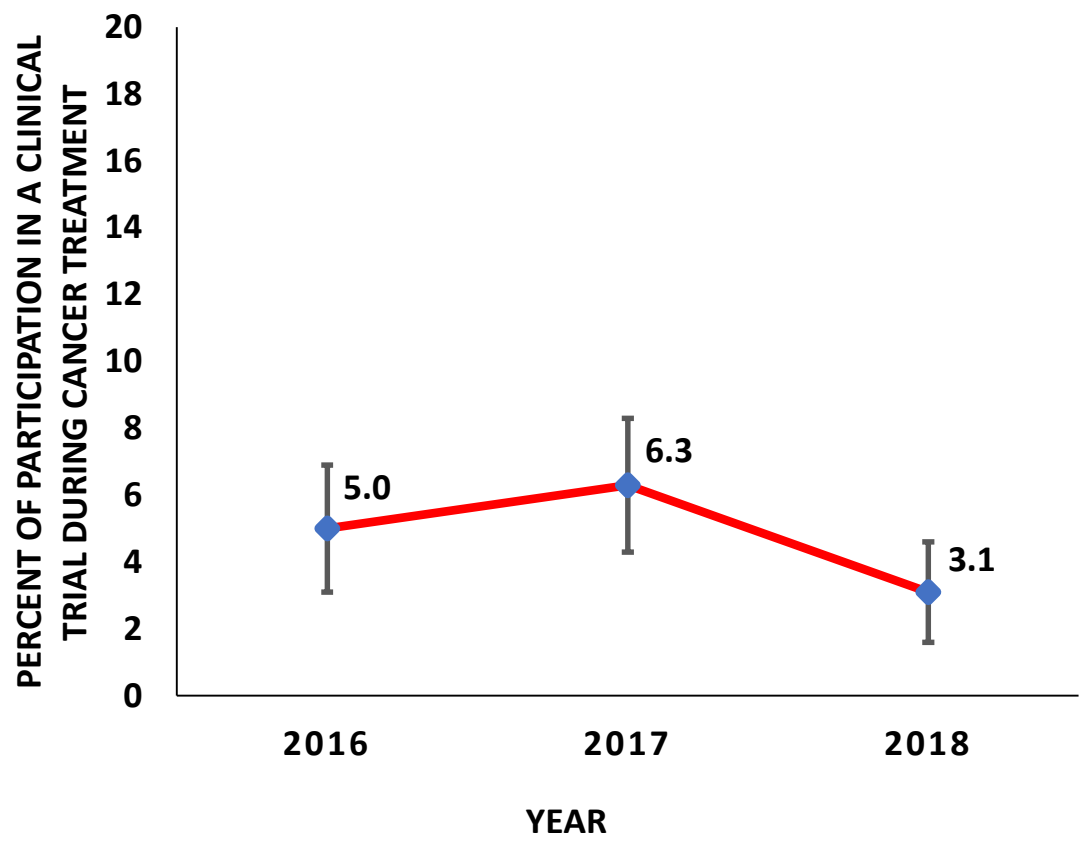
Financial hardship among cancer survivors



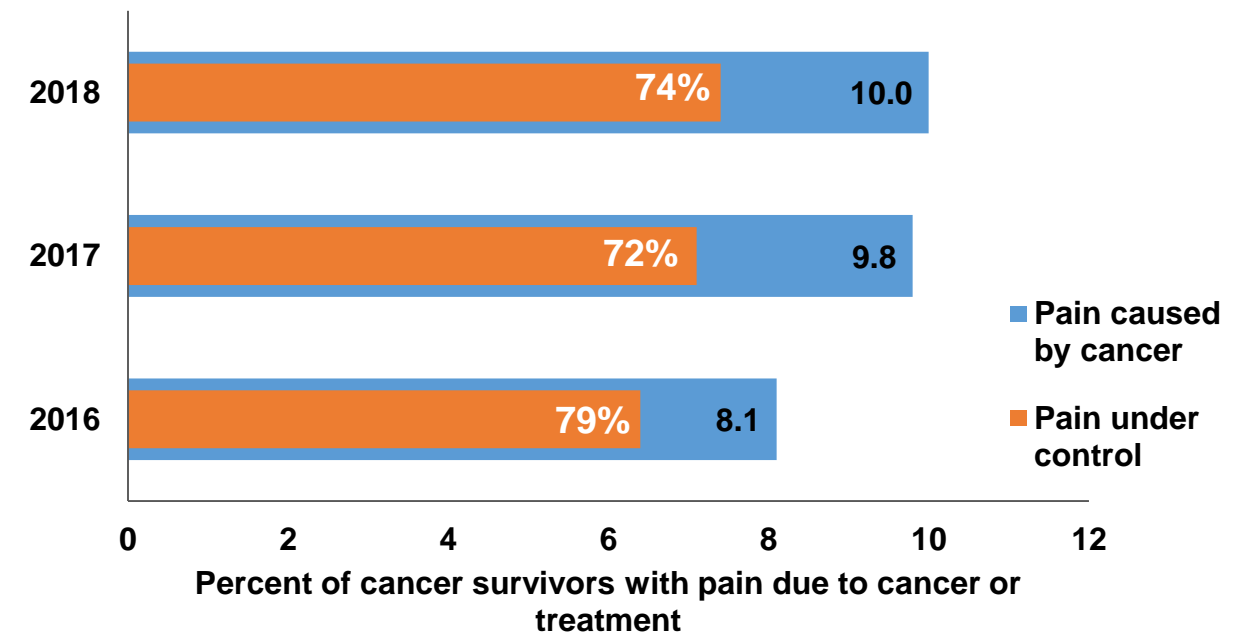
Source: 2016-2018 Kansas Behavioral Risk Factor Surveillance System, Bureau of Health Promotion, KDHE

Participation in Clinical Trial and Pain Management among Kansas Survivors, KS 2016-2018

Participation in clinical trial among Kansas survivors



Pain Management among Kansas survivors



Source: 2016-2018 Kansas Behavioral Risk Factor Surveillance System, Bureau of Health Promotion, KDHE